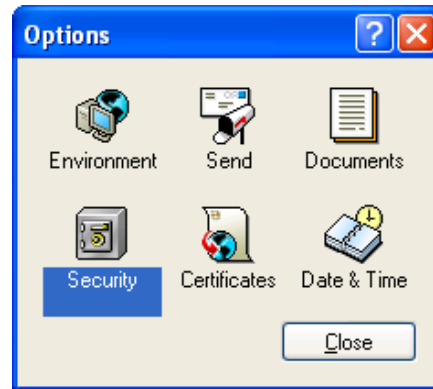
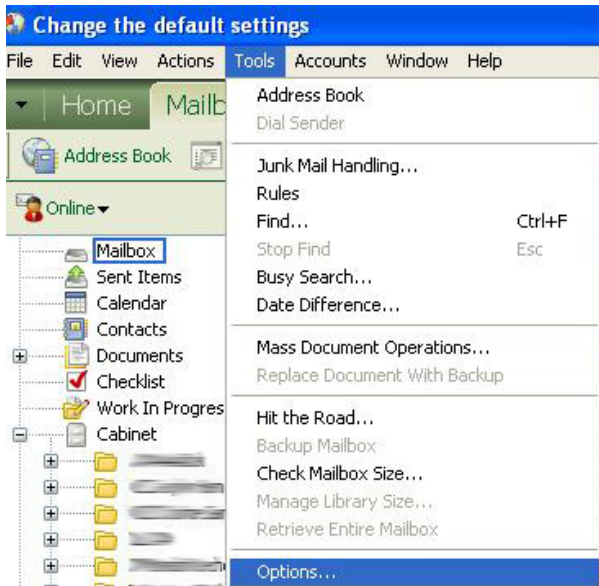


Changing Your Groupwise Password

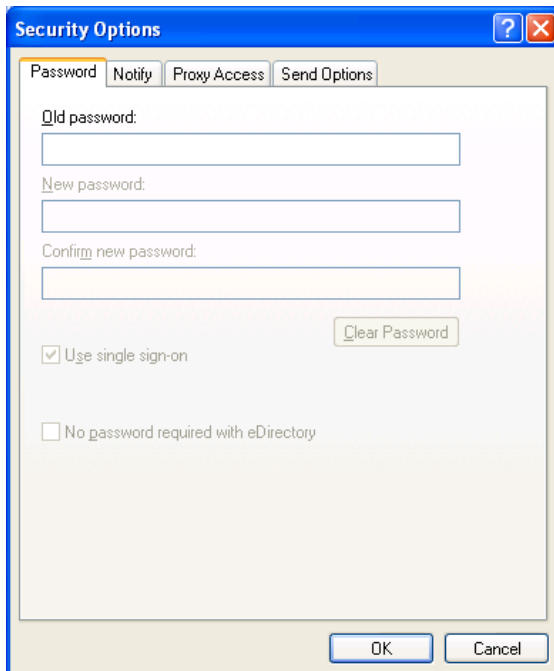
When the time comes to change your Groupwise password, here are the steps you need to take.

Open Groupwise
Click on Tools → Options

A dialog box will open – click on Security



Type in your existing password, and in the next two areas, type your new password. You must type it twice, once to set, a second time to confirm.



Select OK, and that's it! Your password has been changed.