



**BRANDYWINE
HEIGHTS
AREA
SCHOOL
DISTRICT**

Transportation Overview

February 3, 2020

Transportation Quick Statistics

- Total miles driven in 2018-19: 554,519
- Average miles driven per day: 3,081
- Average cost per mile: \$2.83
- Total students transported in 2018-19: 1,352
- Average annual cost per student: \$1,163
- Longest current route is 56 miles round trip for a non public student
 - 5 other routes for non public students are in excess of 50 miles
- Vehicles transport to six different counties
- Total vehicle fleet: 42
- Total buildings serviced: 43



Background

- Brandywine Heights Area School District provides transportation services according to School Board policy 810.
- School Board Policy 810 adheres to the transportation section of the PA School Code of 1949.



School Board Policy 810 – Highlights

The Board will provide transportation for ***secondary students*** who live more than ***two miles*** from school by the nearest public highway and for ***elementary students*** who live more than ***one and one-half miles*** from school by the nearest public highway. No transportation route will travel on a private way or private road...

...student pickup or drop-off will be considered based on ***specific requirements*** that are identified in a ***special needs student's IEP***...

...transportation shall be provided on ***hazardous roads***, and no pupil shall be required to walk along a highway where there are no sidewalks and the road or traffic conditions are such that walking on the shoulder of the road constitutes a ***hazard to the safety of the child***...



School Board Policy 810 - Highlights

- **Non Public Transportation:**
 - The Board shall transport eligible resident students who are enrolled in nonpublic schools provided that are:
 - Certified by PDE.
 - Located within the distance prescribed by law; ten miles from the district's closest outlying border along the nearest public highway.



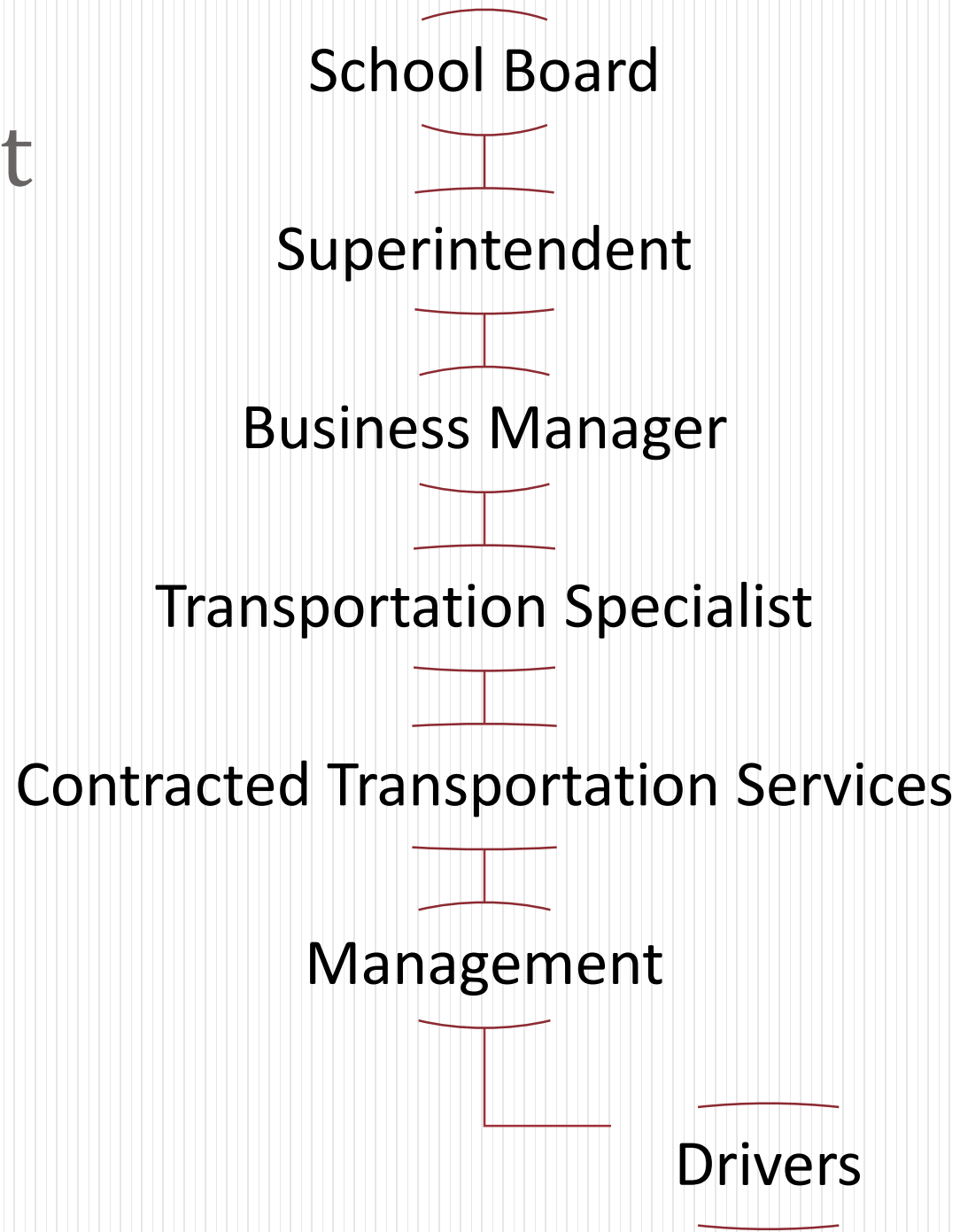
School Board Policy 810 - Highlights

- **Extracurricular Transportation**

- Contractors can transport students only for the district with which they have a contract.
- The contract for transportation of student to and from extracurricular activities must be made by an official representative of the school district.
- Any money must be collected by the school district and paid by them to the school bus contractor.



Organization Chart

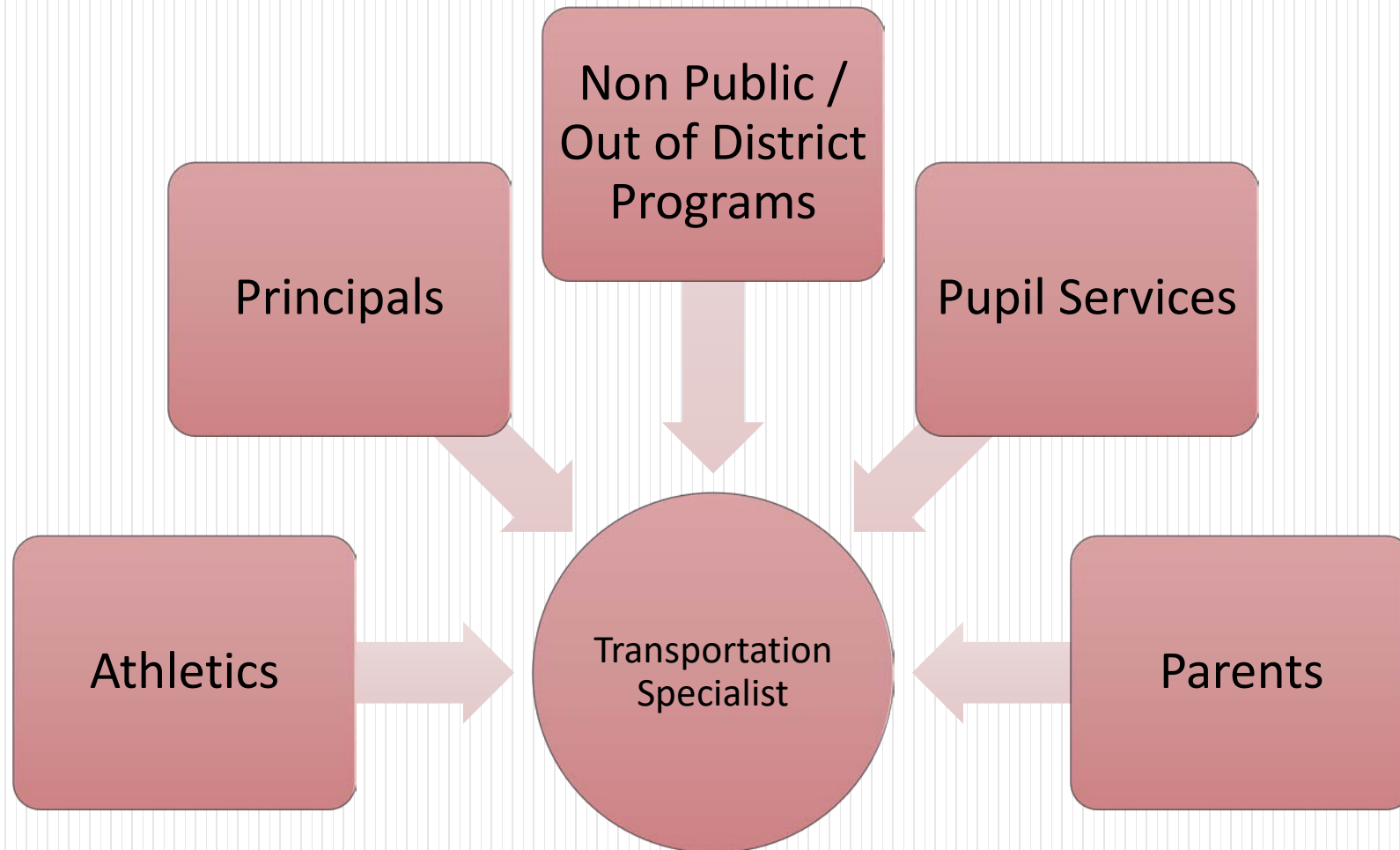


Transportation Services

- Primary contracted services provided by Brandywine Transportation
 - District provider for many years
 - Current contract expires at the end of 2019-20 SY
 - Plan to RFP in late winter/early spring
- BCTC transportation provided by Eshelman
 - Paid for through BCTC fee
 - No direct contract with BHASD
- District owns a small fleet of vans



Communication Point of Contacts



Students Transported in 2018-19

- Public School (including Charters): 1,248
- Non Public: 104
- Public School Transported due to Hazardous Conditions: 75
- Charter Schools outside of District: 16
 - 2017-18: 8



Vehicle Fleet (excluding District owned Vans)

- Total Vehicles: 42
 - 72 Passenger Bus: 21
 - 48 Passenger Half Bus: 1
 - Mini Bus: 4
 - Vans: 16

Transportation Cost Detail

			2018 -19	
			\$	%
Transportation			673,509	43%
Diesel Fuel			82,085	5%
Unleaded Fuel			39,127	2%
Sub-Total Regular Trans:			794,721	51%
Special Ed			369,920	24%
Non Public			298,621	19%
Charter Schools			54,754	3%
Athletics			45,041	3%
Activities & Field Trips			9,364	1%
Total Transportation Cost:			1,572,421	100%

*excludes District owned Vans & BCTC



Transportation Subsidy - Historical

Year	Amount
2018-19	\$712,027
2017-18	\$691,754
2016-17	\$713,592
2015-16	\$613,909
2014-15	\$627,246



Transfinder – Routing Software



- **Routerfinder Pro**

- *“Is one of the most intuitive methodologies for transportation routing, scheduling, and planning for school transportation management and attendance zone planning.”*

- Industry leader
- District has used for several years
- Two day training seminar
- Need to clean up and optimize
- Apply a data driven focus
- Goal to minimize cost / maximize subsidy

